

CaviJet™

ELITE Ultrasound Cavitation & Tri-Polar RF System

Non-Invasive — No Downtime

- Fat Elimination
- Body Shaping
- Skin Tightening

**Low Intensity Cavitation
Ultrasound & Focused Tri-Polar
Radio Frequency (RF)**



NEW Introducing

- ✓ **Dual Frequency (28 kHz & 40 kHz)**
- ✓ **Low Intensity Cavitation Ultrasound (LICU)**
-Non-Thermal Low Frequency LICU for Comfortable and Quick Fat Elimination
- ✓ **Focused Tri-Polar RF (1 MHz)**
-Delivers RF to Superficial, Medium and Deep Skin Layers
- ✓ **Non-Invasive and Painless Aesthetic Fat Reduction & Tissue Tightening Procedures with No-Downtime for Optimal Results**



Fountain of Youth
Look Young — Be Young
SYBARITIC

CaviJet™

ELITE Ultrasound Cavitation & Tri-Polar RF System

Dual Low Frequency (28 kHz & 40 kHz)
Ultrasound Cavitation is Combined with Tri-Polar RF
for Faster, More Dramatic Body Shaping & Fat Removal
with Beneficial Tissue Tightening

The combination of two non-thermal ultrasound frequencies (28 kHz and 40 kHz) is a breakthrough in body shaping technology. The **Dual Frequency Low Intensity Cavitation Ultrasound (LICU)** platform makes CaviJet ELITE the preferred system for many aesthetic body shaping applications. The further addition of a tri-polar RF modality allows users to deliver RF energy to superficial, medium or deep skin layers for optimal thermal treatment efficacy and efficiency.

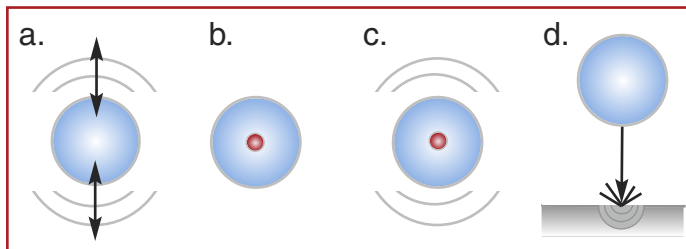
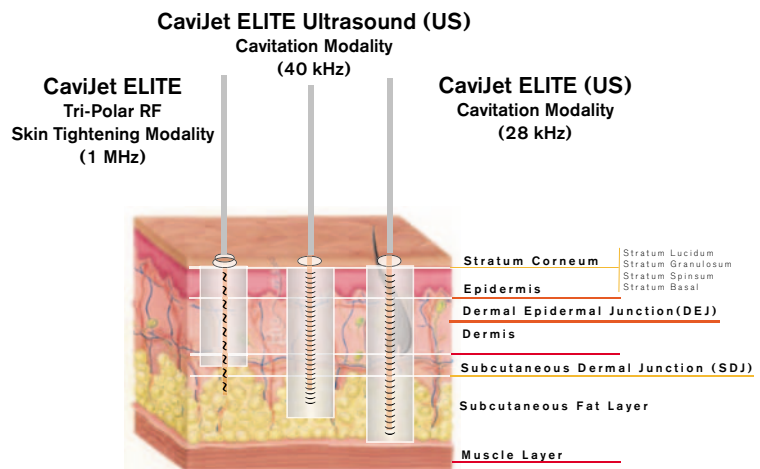
Variable Dual Frequency Ultrasound

Through the use of proprietary dual frequency ultrasound generators, CaviJet ELITE enables the selection of three different frequency options for more flexibility and greater results: 28 kHz, 40 kHz and 28/40 kHz dual mode.

With both RF and Ultrasound, the lower the frequency used, the deeper the energy will penetrate into the tissue. Ultrasound energy can penetrate into the subcutaneous fat layer and RF energy can penetrate to the deepest layers of the dermis.

Ultrasound Cavitation

“**Cavitation**” is defined as the “formation of partial vacuums within a flowing liquid as a result of mechanical force” and is described in the illustration below. When applied with sufficient intensity in aesthetic cavitation treatments, tiny vacuums or cavities (often referred to as “bubbles”) are repeatedly generated inside the interstitial fluid between tissue cells in a safe, controlled manner.



- Cavitation bubbles oscillate and induce shear stresses on cells.
- High temperatures at the bubble core, created by bubble collapse, induce chemical changes in the surrounding fluid.
- Sudden collapse of bubbles sends shock waves capable of disrupting tissue and fat cell walls.
- Collapsing bubbles can also form high-velocity micro-jets which penetrate tissue or create secondary shock waves.

CaviJet ELITE Treatments Result in Efficient Fat Elimination, & Shrinkage of Fat Cells, with Skin Tightening & Improved Skin Tone

Ultrasound Cavitation Fat Removal

When applied in proper frequency and intensity to excessive layers of subcutaneous fat, low frequency ultrasound waves can cause cavitation vacuums or “bubbles” to implode against fat tissue, applying steady pressure until the membrane ruptures. This rupture allows the liquid fat (mainly triglycerides) inside the fat cells to be emptied into the fluid between the fat cells called the “interstitial space” (as depicted in photos). The fat cell contents and the remaining debris is then more easily transported and eliminated via the lymphatic system.



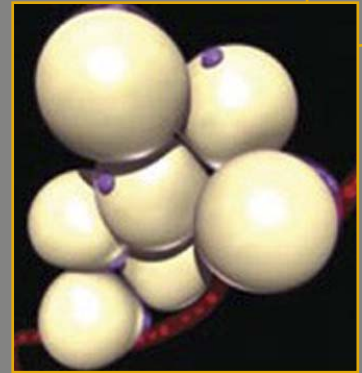
Tri-Polar Radio Frequency (RF) Skin Tightening

The **CaviJet™ ELITE System** also includes a tri-polar RF modality to further enhance treatment results. RF current is formed when charged particles flow through a closed circuit. As the energy meets resistance in the tissue, heat is produced. The generated heat is deposited deeply into the dermis causing immediate collagen contraction and regeneration, improving wrinkles and skin laxity. The thermal effects of RF energy can also reduce cellulite and excess body fat. The **CaviJet** RF handpiece utilizes a tri-polar electrode configuration, enabling the operator to treat at multiple treatment depths simultaneously. The distribution of the current in the tissue is safe, controlled and extremely effective for body shaping treatments.

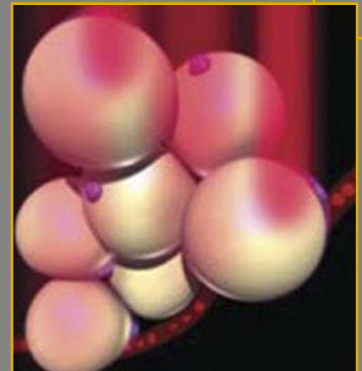
Synergistic Technologies

The tissue heating and targeted depth of penetration achieved with **CaviJet's** RF modality complements the LICU feature by moving the emulsified fat more quickly through the body's natural lymphatic system. **CaviJet's** RF mechanism of action also thermally heats and denatures dermal collagen with resultant collagen fibril contraction, tissue contraction and thermally mediated injury leading to tissue tightening, new collagen tissue formation and remodeling. The result is efficient fat elimination and shrinking of the subcutaneous fat layer, with tightening and improved skin tone.

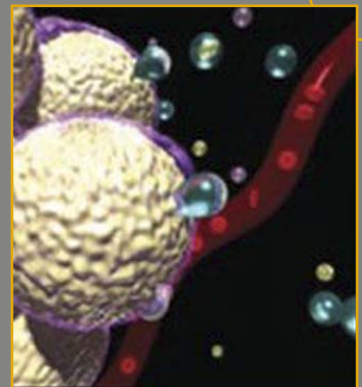
Adipocytes at rest



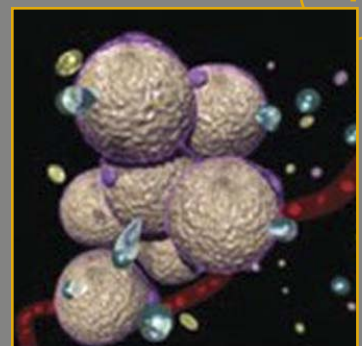
The tissue heating at targeted depth



Pores have formed on the adipocytes allowing contents to spill out



Water, Glycerol and Free Fatty Acids move out into interstitial space



CaviJet™

ELITE Ultrasound Cavitation & Tri-Polar RF System



CaviJet™ ELITE treatments provide Thermal Focused Tri-Polar RF & Non-Thermal Low Intensity ULTRASOUND Cavitation for Superior Results!



Focused Tri-Polar RF

Deliver current to either superficial, medium or deep skin layers for tissue tightening and body shaping



Dual Frequency (28 kHz & 40 kHz) Low Intensity Cavitation Ultrasound

Modality for fat elimination, circumference reduction and cellulite reduction.



Large Color Touch Screen 8.4" (21.34 cm) with 12 Pre-Set Body Treatment Programs

RF INDICATIONS:

Collagen Remodeling
Skin Tightening
Anti-Wrinkles

ULTRASOUND CAVITATION INDICATIONS:

Fat Elimination
Cellulite Reduction
Circumference Reduction

RF Specifications:

Focused Radio Frequency Waves
Electrode Configuration: Tri-polar
RF Handpiece: 26.3 mm External Diameter
Frequency: 1 MHz
Power: Adjustable, up to 100 watts
Continuous or Pulsed Operation:
Pulse Duration: 75, 105 or 135 ms
Rest Period: 15, 45 or 75 ms
Electrode Spot Size Areas: Tri-polar 19.6 cm²
Cooling: Water Cooled
Non-invasive, Thermal

Device Specifications:

Display: 8.4 inch (21.34 cm) color touch screen
Power Supply: 12v
Non-invasive, Non-thermal
Electrical Supply: 110V or 220 VAC, +/- 10% 5A, 50 Hz
Weight: 63 lbs/ 29 kg.
Table Top, available with matching cart (optional) shown.

Ultrasound Specifications:

Low Intensity/Mechanical Oscillation Waves
Ultrasound Transducer Handpiece: 50 mm Diameter
Frequency: 28 kHz, 40 kHz or Dual 28/40 kHz
Power: Adjustable, up to 100 watts
Spot Size Area: 19.6 cm²
Pulsed Operation
Pulse Duration Range: 1 to 5 seconds
Pulse Delay: 500 msec
Pulse Trains: 4, 8 or 12 sec.



WWW.SYBARITIC.COM

Toll Free 1 (800) 445.8418 · Tel 1 (952) 888.8282 · Fax 1 (952) 888.8887 · info@sybaritic.com